



CX4 CRYSTAL

Fundamental Mode: 600 kHz to 1.4 MHz

Overtone: 1.8432 MHz - 2.5 MHz

Ultra-Miniature Low Profile
Surface Mount Quartz Crystal

DESCRIPTION

STATEK's CX4 quartz crystals are hermetically sealed in an ultra-miniature low profile surface mount ceramic package. This high quality quartz resonator forms the basis of a stable oscillator.

FEATURES

- Designed for low power applications in this frequency range
- Smallest available package in this frequency range
- Hermetically sealed ceramic package
- Excellent aging characteristics
- Full military testing to MIL-PRF-3098 available
- Designed and manufactured in the USA

APPLICATIONS

Medical

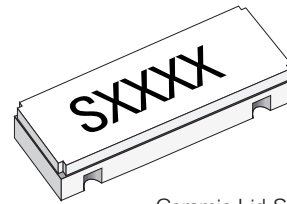
- Pacemaker, defibrillator and hearing aid

Industrial, Computer & Communications

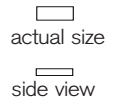
- PCMCIA (FAX, Modem and LAN)
- Smart Card

Military & Aerospace

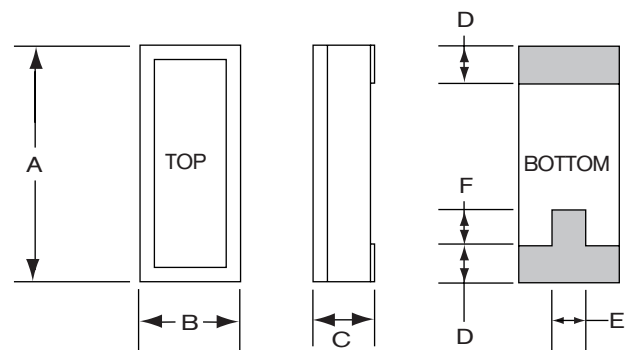
- Airborne hybrid computer
- Low power system clock
- Hybrid multi-chip modules



Ceramic Lid Shown



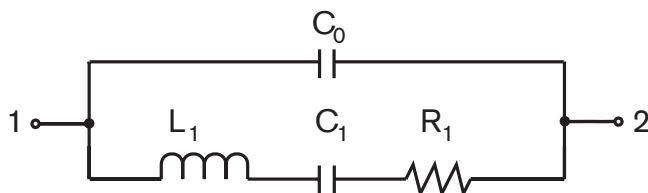
PACKAGE DIMENSIONS



DIM	TYP.		MAX.	
	inches	mm	inches	mm
A	0.197	5.00	0.210	5.33
B	0.072	1.83	0.085	2.16
C	-	-	see below	
D	0.036	0.91	0.046	1.16
E	0.020	0.51	-	-
F	0.025	0.64	-	-

DIM "C"	GLASS LID		CERAMIC LID	
	inches	mm	inches	mm
MAX	0.045	1.14	0.050	1.27
SM1	0.045	1.14	0.050	1.27
SM2/SM4	0.046	1.17	0.051	1.30
SM3/SM5	0.048	1.22	0.053	1.35

EQUIVALENT CIRCUIT



R_1 Motional Resistance L_1 Motional Inductance
 C_1 Motional Capacitance C_0 Shunt Capacitance

SUGGESTED LAND PATTERN

