

Surface Mount Clock Oscillator

Series CC065S

- 1.7mm height
- TTL State Capable

Instrument Part Number: **CC065L Z - A2 B2 45 - 33.333 TS**

**CC065S**  
SERIES  
CC065S

**Z**  
PACKAGING  
Blank = Bulk Pack  
Z = Tape and Reel

**A2**  
OPERATING TEMP  
Blank = 0°C ~ +70°C  
A2 = -40°C ~ +85°C

**B2**  
STABILITY  
Blank = ±100 PPM  
B2 = ±50 PPM

**45**  
SYMMETRY  
Blank = 40 / 60%  
45 = 45 / 55%

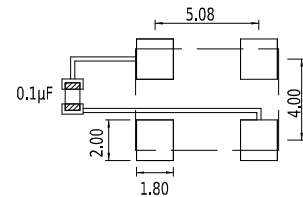
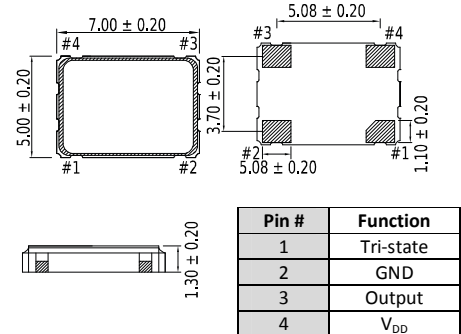
**33.333**  
FREQUENCY  
0.0137 ~ 75.0 MHz

**TS**  
TRI-STATE  
TS = Tristate Standard

Specifications:

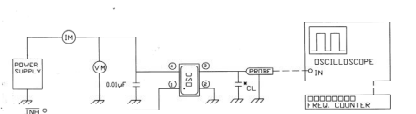
Description	Min	Typ	Max	Unit
Frequency Range:	13.7 KHz	-	75.00 MHz	
Available Stability Options: (Standard)	-100.0 -50.0	-	100.0 50.0	PPM PPM
Output Format	HCMOS			
Low Output Voltage:	-	-	0.5	V
High Output Voltage:	4.5	-	-	V
Output Load:	10 LS TTL, 15pf CMOS			
Input Voltage:	4.5	5.0	5.5	V
Input Current: (1.84 ~ 31.999 MHz)	-	-	25	mA
Input Current: (32.0 ~ 70.0 MHz)	-	-	35	mA
Startup Time:	-	-	10	ms
Rise/Fall Time:	-	-	10	Ns
Duty Cycle:	40	-	60	%
	45	-	55	%
Tri-state Disable:	-	-	0.8	V
Tri-state Enable:	3.6	-	-	V
Storage Temperature Range:	-55	-	+125	°C
Operating Temperature Range: (Standard)	-10 -40	-	+70 +85	°C °C

PACKAGE OUTLINE



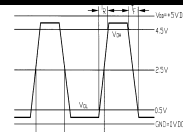
For optimal performance, place a by-pass capacity of 0.1µF as close to the part as possible between V<sub>DD</sub> and GND pads

TEST CIRCUIT



\* CL=15pF or 50pF : Total Fixture And Probe Capacitance

OUTPUT WAVE FORM



$$\text{SYMMETRY} = \left( \frac{V_H}{V_L} \right) \times 100\%$$