

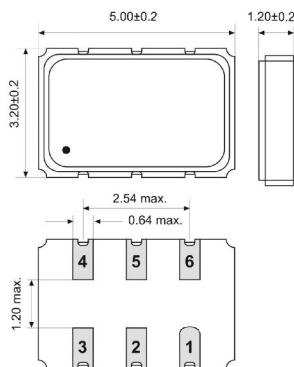
# LVDS VCXO

SMD-version

+2.5V/ +3.3V

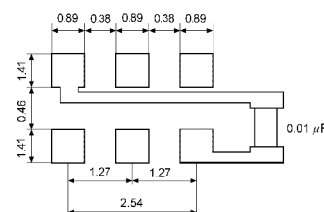
model	KXO-V62	
frequency range	20.0 ~ 700.0 MHz	
frequency stability incl. temperature stability input voltage and load stability, aging	± 50ppm standard ±25ppm available	
operating temperature	-20° ~ +70°C standard -40° ~ +85°C available	
storage temperature	-40° ~ +125°C	
symmetry	50% ± 5%	
rise & fall time max.	0.4 ns (20% ~ 80% of output level)	
output high level max.	1.43V typ. ~ 1.60V	
output low level	0.90V min. ~ 1.10V typ.	
input voltage V <sub>DD</sub>	+2.5V, + 3.3V ± 5%	
input current max.	65 mA	
output load	100 Ohm (OUT – OUTN)	
start up time max.	5 ms	
APR (absolute pulling range) min.	± 50 ppm (Vcon = +1,65V ± 1,65V)	
frequency linearity max.	10%	
frequency slope	positive	
Vcon input impedance min.	10 M Ohm at DC characteristic	
disable delay time max.	200 ns	
enable delay time max.	4 ms	
pin 1 control voltage	1.25V±1.05V (1.25V), 1.65V±1.35V (1.65V)	
pin 2 function	enable input voltage	
pin 2 function	enable input voltage	70% V <sub>DD</sub> min. or NC
	disable input voltage	30% V <sub>DD</sub> max.
output disable current (Pin #1 = VIL) max.	3.5 mA	
phase jitter (12kHz ~ 20MHz) RMS max.	1.0 ps	
typical phase noise	-125 dBc / 1 kHz -160 dBc / 10 MHz	
contents of reel	1000 pcs.	
part no.	12.xxxxx	

**Dimensions (mm):**

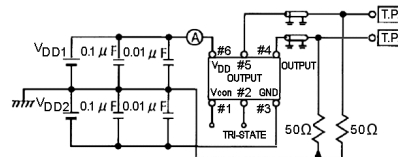


PIN	CONNECTION
1	VC
2	"L" Open or "H"
3	GND
4	Z Output
5	Z C-Output
6	V <sub>DD</sub>

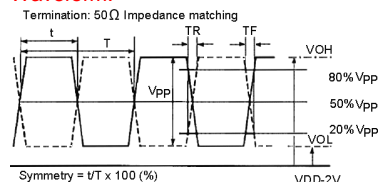
**Suggested soldering pad:**



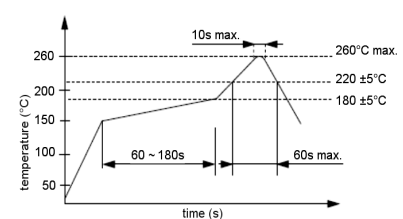
**Test circuit:**



**Waveform:**



**Reflow soldering condition:**



**Tape specification:**

