

PECL Positive Emitter Coupled Oscillator

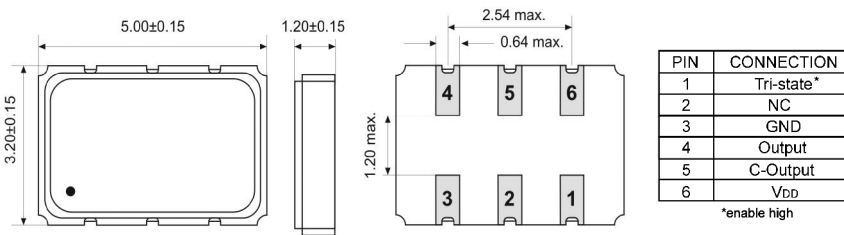
SMD-version

+2,5V / +3,3V

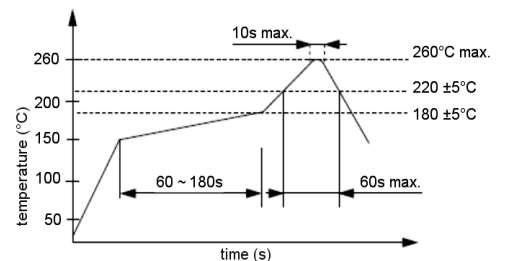
| | |
|---|---|
| model | KXO-68 |
| frequency range | 25,0 ~ 180,0 MHz |
| frequency stability over all conditions | ±100 ppm = KXO-68A ± 50 ppm = KXO-68B ± 25 ppm = KXO-68D |
| storage temperature | -55°C ~ +125°C |
| operating temperature range | standard -20°C ~ +70°C available -40°C ~ +85°C |
| symmetry | 40% ~ 60% (at crossing point) |
| rise and fall time (max.) | 1,0 ns (20% ~ 80% of amplitude) |
| start up time (max.) | 10 ms |
| "0" level max. | V_{DD} to +1,62V DC |
| "1" level min. | V_{DD} to +1,025V DC |
| disable delay time max. | 100 ns |
| enable delay time max. | 10 ms |
| input voltage (V_{DD}) | standard +3,3V DC ±5%, available +2,5V DC ±5% |
| supply voltage | -0,5V to +7,0V |
| input current (Pin#1=Open or VIH) | 90 mA max. |
| load | 50 Ohm (V_{DD} to +2,0V) |
| stand-by control voltage | VIH: +0,7 V_{DD} min. VIL: +0,3 V_{DD} max.* |
| stand-by current (Pin#1=VIL) | 100 µA max. |
| phase jitter (12 kHz to 20 MHz band) | 1 ps RMS max. |
| typical phase noise | -70 dBc/Hz at 10 Hz -105 dBc/Hz at 100 Hz -130 dBc/Hz at 1 kHz -145 dBc/Hz at 10 kHz -145 dBc/Hz at 100 kHz -145 dBc/Hz at 1 MHz |
| contents of reel | 1000 pcs. |
| part no. | 12.xxxxx |

* Internal crystal oscillation to be halted (Pin#1=VIL).

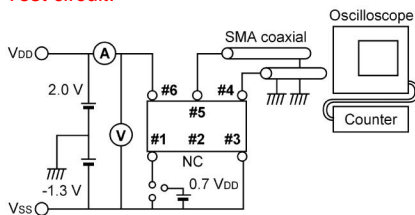
Dimensions (mm):



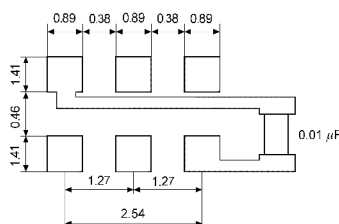
Reflow soldering condition:



Test circuit:

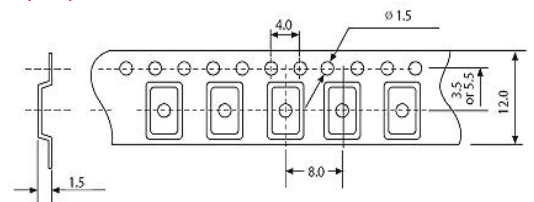


Suggested soldering pad:



Note:
A capacitor of value 0,01µF and 10µF between V_{DD} and GND is recommended.

Tape specification:



reel diameter 180 mm