

Specifications

GXO-U115G: 1.8V supply, E/D with power saving

GXO-U115J: 2.5V supply, E/D with power saving

GXO-U115L: 3.3V supply, E/D with power saving

GXO-U115H: 5.0V supply, E/D high drive

Parameters	Variant				Option Codes
	G	J	L	H	
Frequency range: 1.8 ~ 125MHz 1.8 ~ 160MHz 1.8 ~ 50.0MHz	■	■	■	■	
Frequency stability: ±50ppm ±25ppm ±20ppm	■ □ □	■ □ □	■ □ □	■ □ □	B A D
Operating temperature range: -10 to +70°C -40 to +85°C	■ □	■ □	■ □	■ □	I
Storage temperature range: -55 to +125°C	■	■	■	■	
Supply voltage (V_{DD}): +1.8V (±5%) +2.5V (±5%) +3.3V (±10%) +5.0V (±10%)	■	■	■	■	
Supply current (mA max): 1.8 ~ 32.0MHz >32.0 ~ 50.0MHz >50.0 ~ 80.0MHz >80.0 ~ 125MHz >125 ~ 156MHz	7 15 28 28 -	10 18 18 28 38	20 20 30 40 50	45 45 - - -	
Logic levels: '0' level = 10%V _{DD} max '1' level = 90%V _{DD} min	■ ■	■ ■	■ ■	■ ■	
Start up time: 10ms max 5ms max (≤32.0MHz) 10ms max (>32.0MHz)	■	■	■	■	
Waveform symmetry (@50%V_{DD}): 45:55 max (≤50.0MHz) 40:60 max (>50.0MHz) 40:60 max	■	■	■	■	
Driving ability: 15pF CMOS 50pF CMOS	■	■	■	■	
Rise / fall time (ns max): 1.8 ~ 32.0MHz >32.0 ~ 50.0MHz >50.0 ~ 80.0MHz >80.0 ~ 125MHz >125 ~ 156MHz	5 3.5 3 3 -	5 5 5 4 3	6 6 6 4 3	7 7 - - -	
Enable / disable function: Tristate (control via pad 1)	■	■	■	■	
Stand-by current (power-saving): 10µA	■	■	■	■	

■ Standard. □ Optional - Please specify required code(s) when ordering

Features

- 1.8V, 2.5V & 3.3V options with power saving
- 5V with high drive capability - up to 50pF
- Enable / disable tristate function
- Custom specs & smaller quantities available
- Ceramic package with metal lid

Enable / Disable Function

Input (pad 1)	Output (pad 3)
Open	Enabled
'1' level	Enabled
'0' level	High Impedance

Note: '0' level = $V_{IL} \leq 30\%V_{DD}$, '1' level = $V_{IH} \geq 70\%V_{DD}$

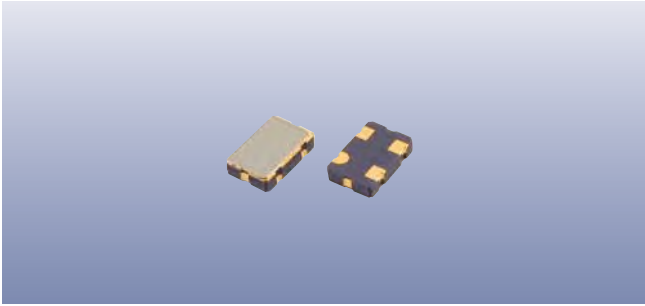
Ordering Information

Product name + variant + option code(s) + frequency

eg: **GXO-U115H/D 40.0MHz** 5V, ±20ppm -10+70°C


GXO-U115L/BI 40.0MHz 3.3V, ±50ppm -40+85°C

Option code X (eg GXO-U115L/X) denotes a custom spec.



Packaging & Handling

Production quantities supplied on T&R, 2k pcs per reel.
Small quantities may be supplied on tape (no reel), or in bulk.

 Static sensitive product. Observe proper handling precautions

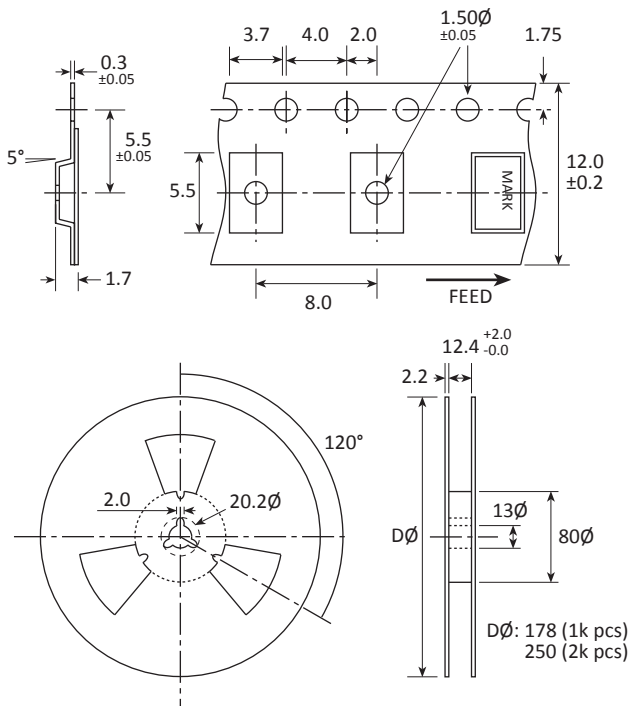
Marking

FREQUENCY
DC

Marking type: Laser
DC = Date code in YM, eg "GE" = May 2017



	A	B	C	D	E	F	G	H	J	K	L	M
Y	1	2	3	4	5	6	7	8	9	0		
M	Jan	Feb	Mar	Apr	May	Jun	Jul	Aug	Sep	Oct	Nov	Dec

Tape & Reel Specification





Not to scale. Dimensions in mm. Tolerances ± 0.1 mm unless otherwise stated.

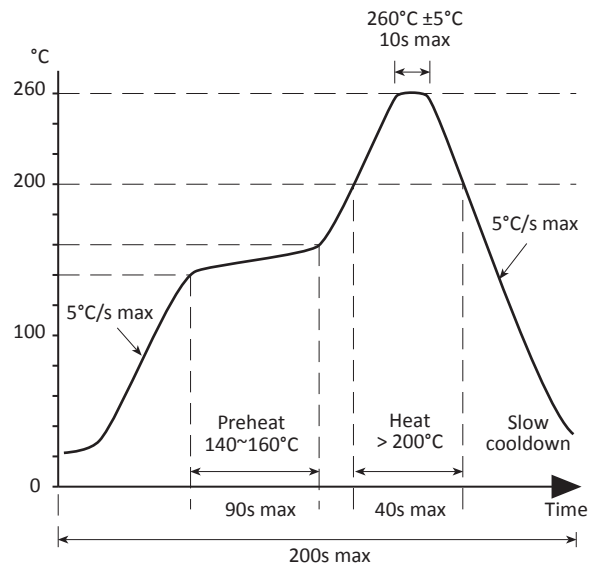
Construction

-  Ceramic body with gold-plated pads
-  Metal lid, seam sealed

Composition

 This product is lead-free, and is fully compliant with current RoHS directives 

Soldering Profile



Solder resistance: $260^\circ\text{C} \times 10 \text{ secs} \times 2$.