

Helping Customers Innovate, Improve & Grow



**Features**

- Low G-Sensitivity
- Vibration hardened
- Tight Tolerances
- Low Phase Noise
- Frequency Range<sup>1</sup>: 10 - 120 MHz

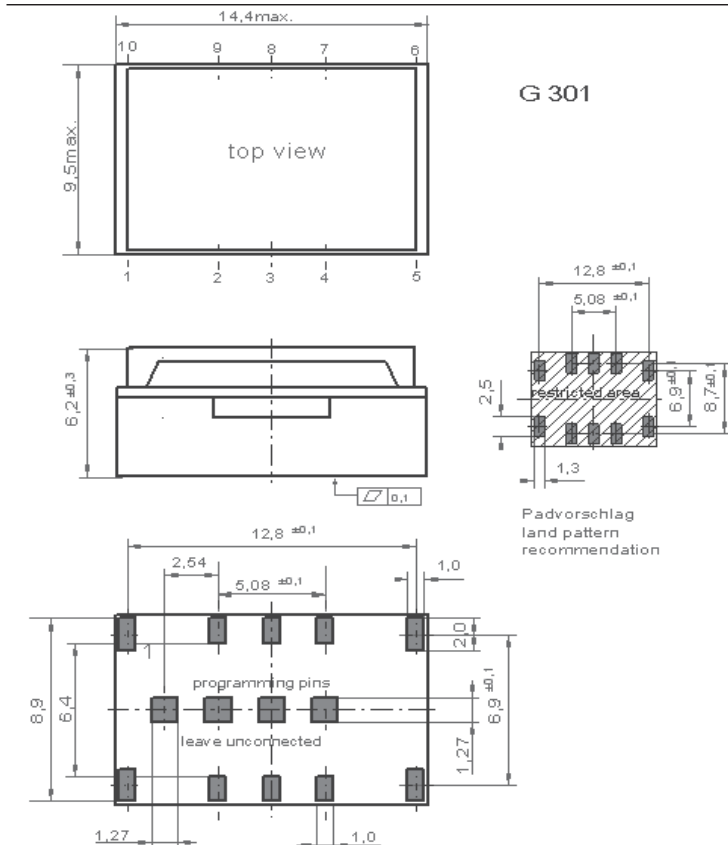
**Applications**

- Vibration Environment
- Portable Equipment
- Land Mobile Radio

**Performance Specifications<sup>2</sup>**

Frequency Stabilities <sup>1</sup> (Standard)						
Parameter	Min	Typical	Max	Units	Condition	Options <sup>4</sup>
vs. operating temperature range (referenced to +25°C)	-1.0		+1.0	ppm	-40 to +85°C	
	-1.0		+1.0	ppm	-20 to +70°C	
	-0.5		+0.5	ppm	-0 to +50°C	
Initial tolerance	-1.5		+1.5	ppm	at time of shipment, nominal EFC, 25°C	
vs. supply voltage change	-0.3		+0.3	ppm	V <sub>s</sub> ±5% static	
vs. load change	-0.2		+0.2	ppm	Load ±10% static	
vs. aging / 1 year	-1.0		+1.0	ppm	after 30 days of operation	
vs. aging / 10 year	-2.5		+2.5	ppm	after 30 days of operation	
Frequency Stabilities <sup>1</sup> (Stratum 3 TCXO Frequency range - 10 to 120 MHz)						
vs. operating temperature range (referenced to +25°C)	-0.8		+0.8	ppm	-40 to +85°C	
	-0.8		+0.8	ppm	-20 to +70°C	
	-0.28*		+0.28*	ppm	-20 to +70°C	
	-0.28*		+0.28*	ppm	-0 to +50°C	
Initial tolerance	-1.0		+1.0	ppm	at time of shipment, nominal EFC, 25°C	
vs. supply voltage change	-0.3		+0.3	ppm	V <sub>s</sub> ±5% static	
vs. load change	-0.1		+0.1	ppm	Load ±10% static	
vs. aging / 20 years	-2.5		+2.5	ppm	after 30 days of operation	
overall tolerance	-4.6		+4.6	ppm	Note: * Stratum 3 per GR-1244-CORE: <±4.6 ppm for all causes and 20 Years aging, Holdover: <±0.37 ppm over 24 hours	

# Outline Drawing / Enclosure



Pin Connections:	
1	N/C
2	NC / Control Voltage Input (Vc)
3	N/C / Enable (optional)
4	Ground (Case)
5	NC
6	NC
7	RF-Output
8	NC
9	Supply Voltage (Vs)
10	NC
Enable (Option <sup>4</sup> ):	
Pin 3	Pin 7
High	Data
Open	Date
Low	High Tristate
Package Code: 508	
Type	Height
G301	6.2 mm

# Typical Phase Noise @ 100 MHz HCMOS

