

| PAD | CONNECTION     |
|-----|----------------|
| 1   | Enable/Disable |
| 2   | Not connected  |
| 3   | Ground         |
| 4   | Output 1       |
| 5   | Output 2       |
| 6   | Supply         |

## Features

- ▶ Differential outputs
- ▶ Low phase jitter
- ▶ Enable / disable tristate function
- ▶ Power saving function
- ▶ Fast rise / fall times

## Specifications

| Parameters                         | Product                               | Option Codes |
|------------------------------------|---------------------------------------|--------------|
|                                    | GXO-L71                               |              |
| Frequency range:                   | 75.0 ~ 270MHz                         |              |
| Frequency stability*:              | ±100ppm<br>±50ppm<br>±25ppm           | B<br>A       |
| Operating temperature range:       | -10 to +70°C<br>-40 to +85°C          | I            |
| Storage temperature range:         | -55 to +125°C                         |              |
| Supply voltage (V <sub>DD</sub> ): | +3.3V (±5%)                           |              |
| Supply current:                    | 66mA max                              |              |
| Output:                            | LVDS                                  |              |
| Offset voltage:                    | 1.25V typ                             |              |
| Differential output voltage:       | 0.247V ~ 0.454V (0.33V typ)           |              |
| Output load:                       | 100Ω                                  |              |
| Start up time:                     | 10ms max                              |              |
| Waveform symmetry:                 | 45:55 max @ 50%V <sub>p-p</sub>       |              |
| Rise / fall time:                  | 0.7ns max (20 ~ 80%V <sub>p-p</sub> ) |              |
| Enable / disable function:         | Tristate (control via pad 1)          |              |
| Output enable / disable time:      | 10 ms / 200ns max                     |              |
| Stand-by current:                  | 30μA max                              |              |
| Phase jitter RMS:                  | 1ps max (0.3ps typ), 12kHz~20MHz      |              |

■ Standard. □ Optional - Please specify required code(s) when ordering

\* Frequency stability is inclusive of calibration @ 25°C, operating temperature range, supply voltage change, load change, ageing, shock and vibration.

## Ordering Information

Product name + option codes (if any) + frequency

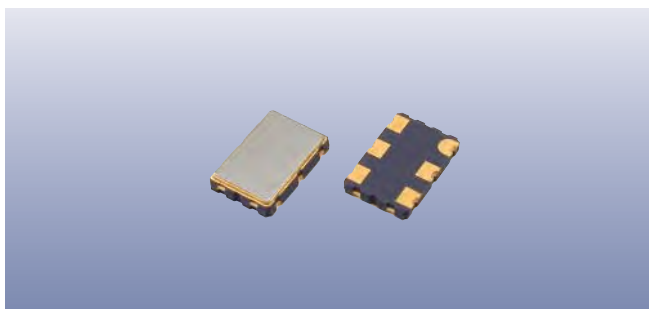
eg: **GXO-L71 80.0MHz** ±100ppm -10+70°C

**GXO-L71/BI 125.0MHz** ±50ppm -40+85°C

Option code X (eg GXO-L71/X) denotes a custom spec.

## Enable / Disable Function

| Input (pad 1)  | Output 1 (pad 4)                     | Output 2 (pad 5)                     |
|--|--------------------------------------|--------------------------------------|
| Open<br>'1' level (≥0.7V <sub>DD</sub> )<br>'0' level (≤0.3V <sub>DD</sub> ) | Enabled<br>Enabled<br>High Impedance | Enabled<br>Enabled<br>High Impedance |



## Construction

- ▮ Ceramic body with gold-plated pads
- ▮ Metal lid, seam sealed

## Composition



This product is lead-free, and is fully compliant with the RoHS 2 directive 2011/65/EU



## Packaging & Handling

Production quantities supplied on T&R, 2k pcs per reel.  
Small quantities may be supplied on tape (no reel), or in bulk.

 Static sensitive product. Observe proper handling precautions

## Marking

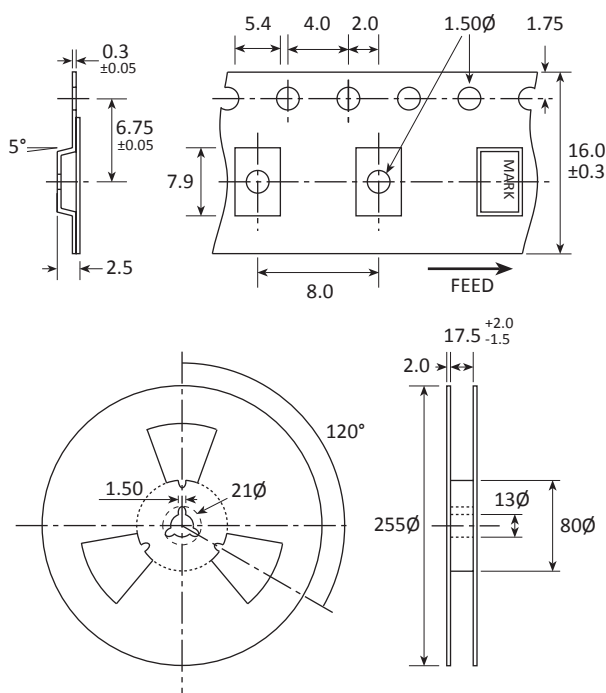
GOLLEDGE  
FREQUENCY  
• PARTNO DC

- Pin 1

Marking type: Laser  
DC = Date code in YM, eg "CE" = May 2013

|   |     |     |     |     |     |     |     |     |     |     |     |     |
|---|-----|-----|-----|-----|-----|-----|-----|-----|-----|-----|-----|-----|
|   | A   | B   | C   | D   | E   | F   | G   | H   | J   | K   | L   | M   |
| Y | 1   | 2   | 3   | 4   | 5   | 6   | 7   | 8   | 9   | 0   |     |     |
| M | Jan | Feb | Mar | Apr | May | Jun | Jul | Aug | Sep | Oct | Nov | Dec |

## Tape & Reel Specification



Not to scale. Dimensions in mm. Tolerances ±0.1mm unless otherwise stated.

## Soldering Profile

